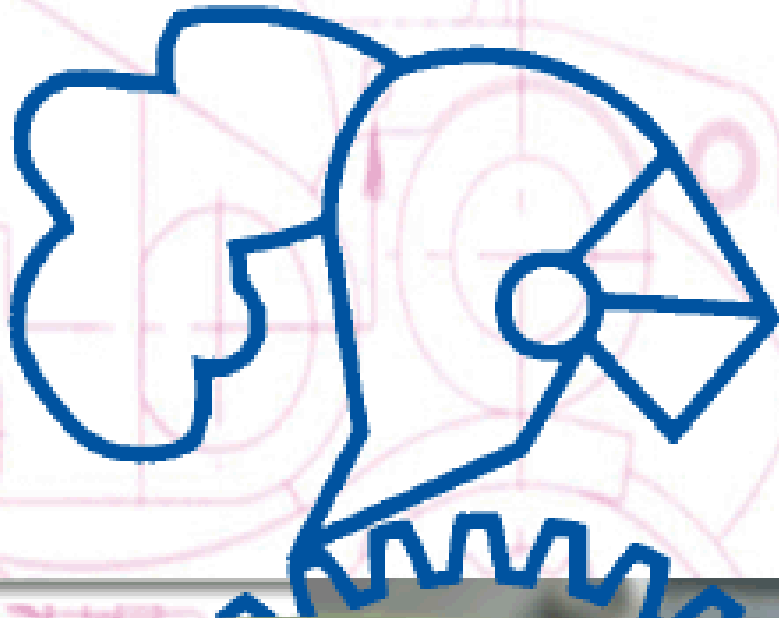


MINI PRICE LIST 2011



JACK  KNIGHT

MINI 4 SYNCHRO S/C CLOSE RATIO GEARS SET

REQUIRES A + MAINSHAFT & LAYSHAFT WITH BEARINGS

M4SGKA Mini 4 Synchro A+ Rod Type £629.00

Note: The above gear kit is available with 'pre A+' and A+ laygear, 1st motion and with either rod or remote idler gear.

INDIVIDUAL PARTS

JKD22A1732	1ST MOTION SHAFT	£176.28
JKD22A1732A	1ST MOTION SHAFT A+	£176.28
JKD22A1733	3RD GEAR	£179.26
JKD22A1734	2ND GEAR	£179.26
JKD22A1735	1ST GEAR	£182.64
JKD22A1736A	REVERSE IDLER GEAR "ROD"	£104.38
JKD22A1736B	REVERSE IDLER GEAR "REMOTE"	£104.38
JKD22A1737	LAYGEAR CLUSTER	£281.43
JKD22A1737A	LAYGEAR CLUSTER A+	£281.43

THE ABOVE GEAR SETS HAVE THE FOLLOWING RATIOS:

Gear Ratios	1st	2nd	3rd	4th
	2.544	1.731	1.258	1.000

MINI 3 SYNCHRO S/C CLOSE RATIO GEAR SET

M3SGK Mini 3 Synchro Gear Kit £583.40

INDIVIDUAL PARTS

JKD22G323	1ST MOTION SHAFT	£176.28
JKD22G308	2ND GEAR	£179.28
JKD22G309	3RD GEAR	£179.28
JKD22G306	LAYGEAR CLUSTER	£316.83

THE ABOVE GEAR SET HAS THE FOLLOWING RATIOS:

Gear Ratios	1st	2nd	3rd	4th
	2.573	1.722	1.255	1.000

PLEASE NOTE:

YOU WILL BE REQUIRED TO USE THE STANDARD LEYLAND 1ST GEAR/HUB WITH THE ABOVE GEARSET

WE REGRET WE ARE UNABLE TO SUPPLY THIS PART.

Please note that the gearkits are not supplied with cases as shown





MINI INVOLUTE DOG BOX KITS 4 SPEED £1,250.00

Gear Ratios	1st	2nd	3rd	4th
AID82021	2.021	1.485	1.195	1.000
AID82161	2.165	1.485	1.195	1.000
AID82315	2.315	1.568	1.195	1.000
AID8175U	1.750	1.361	1.197	1.000

FIVE SPEED INVOLUTE DOG KIT £1500.00

Gear Ratios	1st	2nd	3rd	4th
BID82165	2.165	1.485	1.195	1.000
BID82315	2.315	1.568	1.195	1.000



All above gear sets comprise of mainshaft assembly and a laygear cluster both with needle roller bearings. These gear sets can only be fitted to a 4 synchro gear case and must use an 'A+' layshaft.

MAINSHAFT GEARS

MT041829	1ST GEAR 29 TOOTH	£178.10
MT041830	1ST GEAR 30 TOOTH (2.091 ratio)	£178.10
MT041831	1ST GEAR 31 TOOTH	£178.10
MT051827	2ND GEAR 27 TOOTH	£172.72
MT051828	2ND GEAR 28 TOOTH (Ultra Close)	£172.72
MT061824	3RD GEAR 24 TOOTH	£172.72
MT061826	3RD GEAR 26 TOOTH (Ultra Close)	£172.72
MT061825	3RD GEAR 25 TOOTH (Ultra Close 1.151)	£172.72
MT411822	1ST MOTION A+ 22 TOOTH	£233.58
MT411824	1ST MOTION A+ 24 TOOTH (Ultra Close)	£233.58



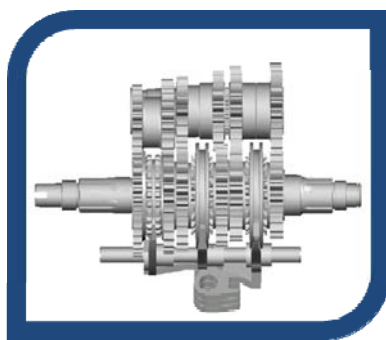
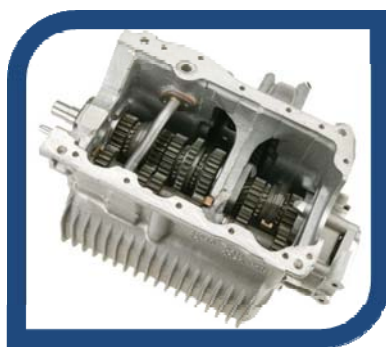
LAYGEAR CLUSTERS

MT01182	2.315 RATIO 14/18/21/23	£360.69
MT011821	2.16 RATIO 15/19/21/23	£360.69
MT0118JC	ULTRA CLOSE 15/18/19/21	£360.69

INVOLUTE GEAR SET PARTS

MT0718	SPACER 1ST GEAR BEARING	£35.73
MT0818	BEARING TRACK - 2nd & 3rd Gears	£42.32
MT0918	1ST/2ND DOG CARRIER	£101.48
MT1018	3RD/4TH DOG CARRIER	£151.48
MT4218	SPACER MAINSHAFT	£36.21
MT1318	1ST/2ND DOG RING	£226.98
MT1418	3RD/4TH DOG RING	£179.13
MT4018	MAINSHAFT	£292.20
MT4318	CIRCLIP MAINSHAFT	£3.03
MT2218	NEEDLE BEARING MAINSHAFT GEARS	£21.19
MT2318	NEEDLE BEARING - LAYSHAFT 1st Gear	£36.91
MT2418	NEEDLE BEARING - LAYSHAFT 4th Gear	£36.87
13H9513	NEEDLE BEARING - 1ST MOTION	£14.84
MT5018	LAYSHAFT - (A+ laygear into remote case)	£56.30





Classic Mini Gearboxes and Gearkits

Gear Engagement Type	Gearbox or Gear Kit	Part No	1st Gear	2nd Gear	3rd Gear	4th Gear	5th Gear	6th Gear
4 Speed SC Synchronmesh	GK	M4SGKA	2.54	1.73	1.26	1.00		
5 Speed SC Synchronmesh	GB	M5SGKA	2.54	1.73	1.26	1.00	0.870	
5 Speed Helical Synchronmesh	GB	M5HGKA	2.54	1.73	1.26	1.00	0.870	
6 Speed SC Synchronmesh	GB	M6SGKA	2.54	1.73	1.26	1.00	0.870	0.804
6 Speed Helical Synchronmesh	GB	M6HGKA	2.54	1.73	1.26	1.00	0.870	0.804
4 Speed SC Dog	GK	AID82021	2.02	1.49	1.20	1.00		
		AID82161	2.17	1.49	1.20	1.00		
		AID82315	2.32	1.57	1.20	1.00		
		AID8175U	1.75	1.36	1.20	1.00		
5 Speed SC Dog	GB	AIDB 5	AS ABOVE OPTIONS				0.870	
6 Speed SC Dog	GB	AIDB 6	AS ABOVE OPTIONS				0.870	0.804
Sequential Pro Shift System								
4 speed	Floor Mount Kit	4SEQST						
5speed	Floor Mount Kit	5SEQST						
6 speed	Floor Mount Kit	6SEQST						

Paddle Option all variants PA5E



Mk. 4 LIMITED SLIP DIFFERENTIAL

MK4LSD CAM AND PAWL TYPE	£670.03
MT01142 COVER	£114.59
MT02142 CAGE	£202.61
MT03142 INNER CAM	£176.30
MT04142 OUTER CAM	£201.22
JKD061A42 PAWL	£15.08

THE ABOVE UNIT USES A 10 SPLINE OUTPUT SHAFT AND REGRETTABLY IS NOT INTERCHANGEABLE WITH EARLY UNITS

Mk. 6 LIMITED SLIP DIFFERENTIAL

0380B FRICTION PLATE TYPE LSD - 24 SPLINE	£539.00
0380B-10 FRICTION PLATE TYPE LSD - 10 SPLINE	£539.00
01007 CROSS PIN	£40.17
03806B FRICTION DISC (ea)	£28.15
03807B CLUTCH PLATE (ea)	£28.15
03820 SIDE GEAR - 24 SPLINE	£33.00
AHD93 SIDE GEAR - 10 SPLINE	£33.00
03821 PLANET GEAR	£22.00
03822 SIDE GEAR RING	£66.00
03830 COVER	£165.00
03831 PLATE	£110.00

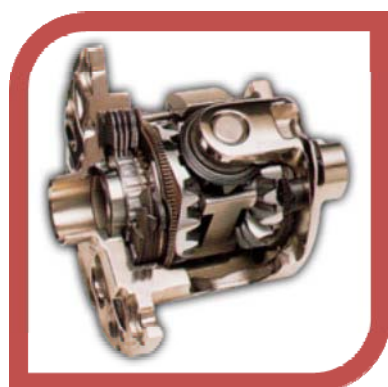


LSD OUTPUT SHAFT

MT124124 24 SPLINE STUB SHAFT (POT JOINT)	£165.82
MT124110 10 SPLINE STUB SHAFT (POT JOINT)	£165.82
MT070F24A 24 SPLINE FLANGES (HARDY SPICER)	£177.56
MT070F10A 10 SPLINE FLANGES (HARDY SPICER)	£177.56
MT0941 BOLT FOR ABOVE SHAFTS	£4.40

MINI DRIVE SHAFT

MT0241L LONG DRIVE SHAFT HARDY SPICER	£218.70
MT0241S SHORT DRIVE SHAFT HARDY SPICER	£218.70
MT3041L LONG DRIVE SHAFT POT JOINT	£224.44
MT3041S SHORT DRIVE SHAFT POT JOINT	£224.44



MINI/MAXI DRIVE SHAFT

MT0141L LONG DRIVE SHAFT	£144.60
MT0141S SHORT DRIVE SHAFT	£144.60

THE SHAFTS REQUIRE HARDY SPICER INNER & MAXI OUTER CV JOINT. THESE REQUIRE MACHINING, PLEASE CALL FOR DETAILS.

EQUAL DRIVE SHAFT KITS

0280A STANDARD KIT	£235.95
0280B24 HARDY SPICER 24 SPLINE KIT	£313.50
0280B10 HARDY SPICER 10 SPLINE KIT	£313.50
0280C24 POT JOINT 24 SPLINE KIT	£301.77
0280C10 POT JOINT 10 SPLINE KIT	£301.77



MINI TRANSFER GEAR KITS

(Comprising the following parts: Primary, Idler & Input Gears)

850cc 'A' SERIES KIT

MTG0850100	STANDARD 1.000 RATIO	£350.80
MTG0850104	SPECIAL 1.043 RATIO	£359.60
MTG0850108	SPECIAL 1.087 RATIO	£368.40

850cc 'A+' SERIES KIT

MTG0850100A	STANDARD 1.000 RATIO	£350.80
MTG0850104A	SPECIAL 1.043 RATIO	£359.60
MTG0850108	SPECIAL 1.087 RATIO	£368.40

1275cc 'A' SERIES KIT

MTG1275100	STANDARD 1.000 RATIO	£320.00
MTG1275104	SPECIAL 1.043 RATIO	£328.80
MTG1275108	SPECIAL 1.087 RATIO	£337.60

1275cc 'A+' SERIES KIT

MTG1275100A	STANDARD 1.000 RATIO	£320.00
MTG1275104A	SPECIAL 1.043 RATIO	£328.80
MTG1275108A	SPECIAL 1.087 RATIO	£337.60

MINI TRANSFER 'ROLLER' KITS

(Excludes Roller Bearing Kit)

850cc

MTG0850100R	STANDARD 1.000 RATIO	£329.24
MTG0850104R	SPECIAL 1.043 RATIO	£337.47
MTG0850108R	SPECIAL 1.087 RATIO	£345.99

1275cc

MTG1275100R	STANDARD 1.000 RATIO	£298.99
MTG1275104R	SPECIAL 1.043 RATIO	£307.22
MTG1275108R	SPECIAL 1.087 RATIO	£315.74

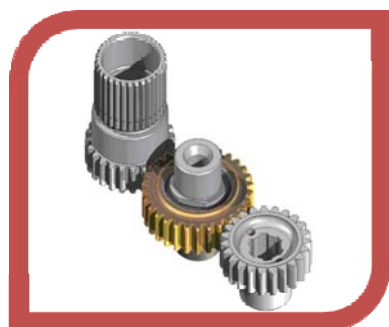
Individual Roller Idler Gears

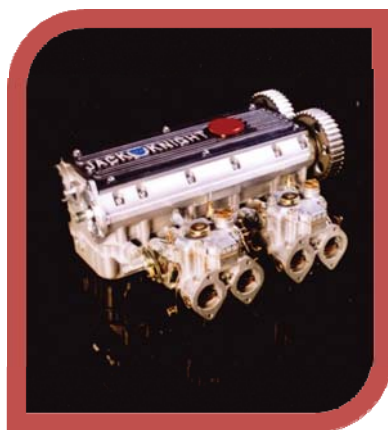
MTG5018A	1.000 RATIO	£99.46
MTG5018C	1.087 RATIO	£111.98

ROLLER BEARING KITS

(Includes Bearing, Shafts & Circlips)

MTG60RBK	'A' Series	£139.76
MTG50RBK	'A+' Series	£139.76





SPARE PARTS - STANDARD TYPE TRANSFER GEARS

850cc PRIMARY GEAR

MTG0118100	1.000 RATIO	£176.78
MTG0118104	1.043 RATIO	£189.06
MTG0118108	1.087 RATIO	£192.81

1275cc PRIMARY GEAR

MTG0218100	1.000 RATIO	£146.53
MTG0218104	1.043 RATIO	£158.81
MTG0218108	1.087 RATIO	£162.56

IDLER GEARS

MTG3718100	1.000 RATIO	£171.32
MTG3618100	1.000 RATIO	£171.32
MTG3718108	1.087 RATIO	£184.22
MTG3618108	1.087 RATIO	£184.22

INPUT GEARS

MTG0518100	1.000 RATIO	£167.09
MTG0518108	1.087 RATIO	£180.10
MTG0518T	TURBO	£180.10
MTG0518916	'ECONOMY' .916	£232.01

MTG0718	Standard Idler Pin 'A' Series	£41.78
MTG0618	Standard Idler Pin 'A+' Series	£41.78
JKMR0051275	Primary Gear Re-bush 1275cc	£71.20
JKMR005850	Primary Gear Re-bush 850cc	£92.95

SPARE PARTS - 'ROLLER' TYPE IDLER GEAR

MTG5518	Bearing	£34.49
MTG6118	Idler Shaft 'A' Series	£73.15
MTG6318	Bush 'A' Series	£35.20
MTG5118	Idler Shaft 'A+' Series	£73.15
MTG5318	Bush 'A+' Series	£35.20
MTG5618	Snap Ring (Each)	£2.20



COMPETITION CROWNWHEEL & PINION SETS

MFD601834	3.466 RATIO STANDARD TYPE CWP	£258.80
MFD601836	3.666 RATIO STANDARD TYPE CWP	£258.80
MFD601837	3.765 RATIO STANDARD TYPE CWP	£258.80
MFD601839	3.929 RATIO STANDARD TYPE CWP	£258.80
MFD601840	4.000 RATIO STANDARD TYPE CWP	£258.80
MFD601841	4.154 RATIO STANDARD TYPE CWP	£258.80
MFD601842	4.231 RATIO STANDARD TYPE CWP	£258.80
MFD601843	4.308 RATIO STANDARD TYPE CWP	£258.80
MFD601846	4.666 RATIO STANDARD TYPE CWP	£258.80
MFD601849	4.917 RATIO STANDARD TYPE CWP	£258.80

MFD501834	3.466 RATIO LSD TYPE CWP	£287.40
MFD501836	3.666 RATIO LSD TYPE CWP	£287.40
MFD501837	3.765 RATIO LSD TYPE CWP	£287.40
MFD501839	3.929 RATIO LSD TYPE CWP	£287.40
MFD501840	4.000 RATIO LSD TYPE CWP	£287.40
MFD501841	4.154 RATIO LSD TYPE CWP	£287.40
MFD501842	4.231 RATIO LSD TYPE CWP	£287.40
MFD501843	4.308 RATIO LSD TYPE CWP	£287.40
MFD501846	4.666 RATIO LSD TYPE CWP	£287.40
MFD501849	4.917 RATIO LSD TYPE CWP	£287.40

INDIVIDUAL PARTS

MFD011834	3.466 CROWNWHEEL STANDARD	£199.58
MFD011836	3.666 CROWNWHEEL STANDARD	£199.58
MFD011837	3.765 CROWNWHEEL STANDARD	£199.58
MFD011839	3.929 CROWNWHEEL STANDARD	£199.58
MFD011840	4.000 CROWNWHEEL STANDARD	£199.58
MFD011841	4.154 CROWNWHEEL STANDARD	£199.58
MFD011842	4.231 CROWNWHEEL STANDARD	£199.58
MFD011843	4.308 CROWNWHEEL STANDARD	£199.58
MFD011846	4.666 CROWNWHEEL STANDARD	£199.58
MFD011849	4.917 CROWNWHEEL STANDARD	£199.58
MFD031834	3.466 CROWNWHEEL LSD TYPE	£231.53
MFD031836	3.666 CROWNWHEEL LSD TYPE	£231.53
MFD021837	3.765 CROWNWHEEL LSD TYPE	£231.53
MFD021839	3.929 CROWNWHEEL LSD TYPE	£231.53
MFD021840	4.000 CROWNWHEEL LSD TYPE	£231.53
MFD021841	4.154 CROWNWHEEL LSD TYPE	£231.53
MFD021842	4.231 CROWNWHEEL LSD TYPE	£231.53
MFD021843	4.308 CROWNWHEEL LSD TYPE	£231.53
MFD021846	4.666 CROWNWHEEL LSD TYPE	£231.53
MFD021849	4.917 CROWNWHEEL LSD TYPE	£231.53

MFD041834	3.466 PINION	£143.60
MFD041834	3.666 PINION	£143.60
MFD041837	3.765 PINION	£143.60
MFD041839	3.929 PINION	£143.60
MFD041840	4.000 PINION	£143.60
MFD041841	4.154 PINION	£143.60
MFD041842	4.231 PINION	£143.60
MFD041843	4.308 PINION	£143.60
MFD041846	4.666 PINION	£143.60
MFD041849	4.917 PINION	£143.60
MT08142	High Quality LSD Crownwheel Bolts (ea.)	£5.38



MINI ROLLER ROCKER KIT

FULL NEEDLE ROLLER TYPE

1 : 1.5 RATIO £180.00



STEERING ASSEMBLIES

245	ALUMINIUM FROM	£330.00
7225	MAGNESIUM FROM	£715.00
6244	MAGNESIUM FROM	£715.00
22645	MAGNESIUM FROM	£462.00

DUE TO THE SPECIAL NATURE OF YOUR STEERING REQUIREMENTS, PLEASE CALL FOR A QUOTATION.

PRICES REFLECT ONE OFF PRODUCTION, DISCOUNT MAY APPLY FOR QUANTITY SALES.

JKD2013	STEERING RACK BLANK	£101.75
JKD2513	STEERING PINION	£72.21
JKD3613	STEERING BUSH (PAIR)	£9.24
JKD2713	PINION BEARING- 35MM (PAIR)	£15.62
4093F27113	PINION BEARING- 32MM (PAIR)	£15.62
4093F21113	SPRING	£4.07
JKD2413	OIL SEAL	£8.91

STEERING COUPLINGS (9/16 X 36 SPLINE)

JKD4513	MALE END (1")	£26.51
JKD2813	MALE END (3/4 ")	£22.94
JKD2913	FEMALE END	£35.31
JKD2913-5/8	FEMALE END (5/8 SPLINE)	£35.81
JKD3213	UNIVERSAL JOINT	£37.35

JKD96-37	BALL END (RENAULT END) (PAIR)	£92.40
----------	-------------------------------	--------

METRIC & UNIFIED THREADS AVAILABLE.
PLEASE CALL WITH YOUR REQUIREMENTS.

PLEASE NOTE:
PRICES FOR RACK BARS & PINIONS ARE FOR STANDARD COMPONENTS, QUOTATIONS CAN BE GIVEN ON REQUEST FOR SPECIAL COMPONENTS

